

2023

USA INVENTORY PROGRAM



INDEX

4. ASGARD

8. D_20

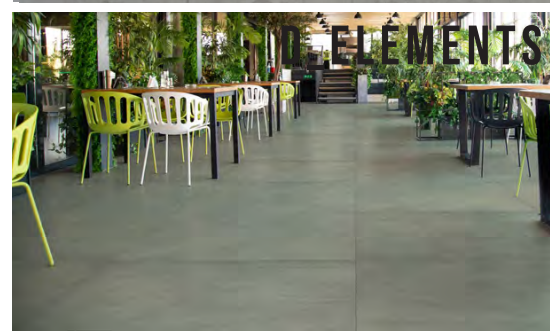
12. D_ELEMENTS

16. OCEAN BLACK

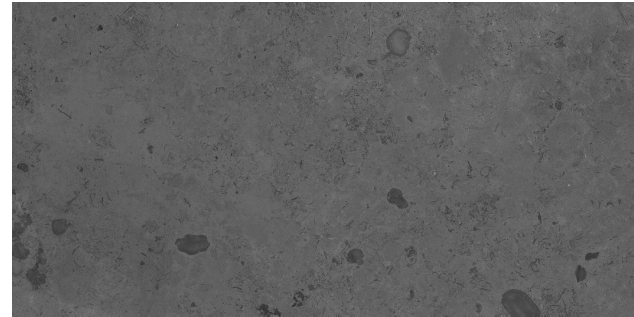
22. CONTACT INFORMATIONS

26. PACKING AND WEIGHTS

27. LAYING AND CLEANING RECOMMENDATIONS



PIETRA / STONE ASGARD



HARBOR
60x120 (24"x48") rectified



ASGARD HARBOR 60x120 (24"x48") rectified

PIETRA / STONE ASGARD



CHATEAU
60x120 (24"x48") rectified



ASGARD CHATEAU 60x120 (24"x48") rectified

PIETRA / STONE

ASGARD



SKYLINE
60x120 (24"x48") rectified



ASGARD SKYLINE 60x120 (24"x48") rectified

COLORS & TEXTURES

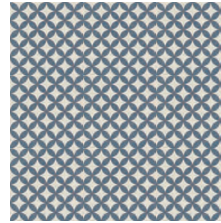
D_20



D_20 F1 20x20 (8"x8") rectified



C1 - 20x20 (8"x8") rectified



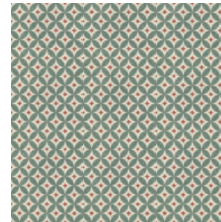
F1 - 20x20 (8"x8") rectified



G1 - 20x20 (8"x8") rectified



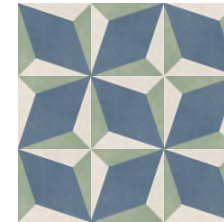
C2 - 20x20 (8"x8") rectified



F2 - 20x20 (8"x8") rectified



G2 - 20x20 (8"x8") rectified



D_20 C2 20x20 (8"x8") rectified

COLORS & TEXTURES

D_20



F3 - 20x20 (8"x8") rectified



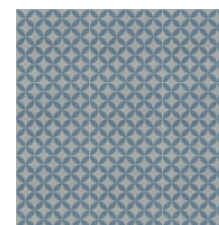
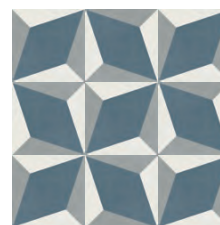
G4 - 20x20 (8"x8") rectified



C3 - 20x20 (8"x8") rectified



F4 - 20x20 (8"x8") rectified





D_ELEMENTS CADMIUM 30x90 (12"x36") rectified

COLORS & TEXTURES D_ELEMENTS

60x120 (24"x48")

CADMIUM
60x120 (24"x48") rectified

30x90 (12"x36")

CADMIUM
30x90 (12"x36") rectified

60x120 (24"x48")

OXYGEN
60x120 (24"x48") rectified

30x90 (12"x36")

OXYGEN
30x90 (12"x36") rectified

60x120 (24"x48")

NICKEL
60x120 (24"x48") rectified

30x90 (12"x36")

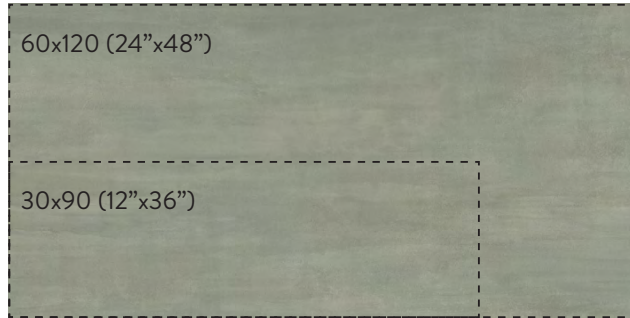
NICKEL
30x90 (12"x36") rectified



D_ELEMENTS NICKEL 60x120 (24"x48") rectified

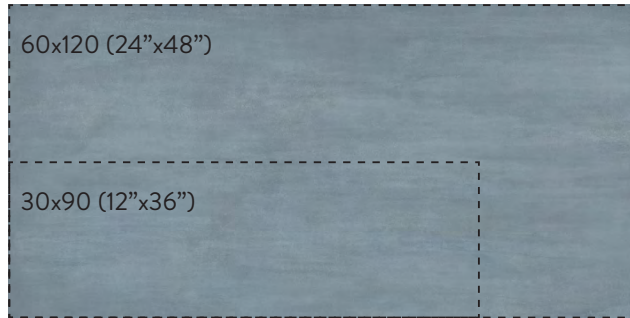
COLORS & TEXTURES

D_ELEMENTS



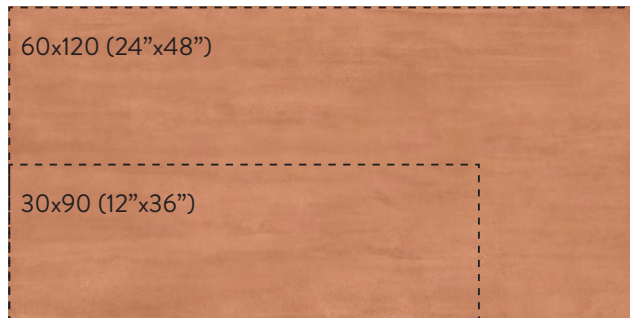
KRIPTON
60x120 (24" x 48") rectified

KRIPTON
30x90 (12" x 36") rectified



COBALT
60x120 (24" x 48") rectified

COBALT
30x90 (12" x 36") rectified



COPPER
60x120 (24" x 48") rectified

COPPER
30x90 (12" x 36") rectified

D_ELEMENTS COPPER 60x120 (24" x 48") rectified - CADMIUM 60x120 (24" x 48") rectified
D_LASH NORDIC SAND 60x60 (24" x 24") rectified

PIETRA / STONE OCEAN BLACK

60x120 (24"x48")

30x60 (12"x24")

PEARL

60x120 (24"x48") rectified

PEARL

30x60 (12"x24") rectified

60x120 (24"x48")

30x60 (12"x24")

WIND

60x120 (24"x48") rectified

WIND

30x60 (12"x24") rectified

60x120 (24"x48")

30x60 (12"x24")

ROCK

60x120 (24"x48") rectified

ROCK

30x60 (12"x24") rectified



PIETRA / STONE

OCEAN BLACK

60x120 (24"x48")

30x60 (12"x24")

60x120 (24"x48")

30x60 (12"x24")

SAND

60x120 (24"x48") rectified

SAND

30x60 (12"x24") rectified

ABYSS

60x120 (24"x48") rectified

ABYSS

30x60 (12"x24") rectified

PACKING AND WEIGHTS

SIZE			Pcs for box	Sqm for box	KG for pallet	Boxes for pallet	Sqm for pallet
ASGARD							
CHATEAU - SKYLINE - HARBOR	24"X48"	Rectified	2	1,44	34,11	36	51,84
D_20							
20X20	8"X8"	Rectified	16	0,64	14,40	72	46,08
D_ELEMENTS							
CADMIUM - OXYGEN - NICKEL KRIPTON - COBALT - COPPER	24"X48"	Rectified	2	1,44	34,11	36	51,84
CADMIUM - OXYGEN - NICKEL KRIPTON - COBALT - COPPER	12"X36"	Rectified	5	1,35	27,75	48	64,80
OCEAN BLACK							
PEARL - WIND - ROCK SAND - ABYSS	24"X48"	Rectified	2	1,44	34,11	36	51,84
PEARL - WIND - ROCK SAND - ABYSS	12"X24"	Rectified	8	1,44	26,96	32	46,08

The packing details are a merely indicative reference to be verified for each size.

GAMBINI GROUP S.P.A. RESERVES THE RIGHT TO CHANGE THE PRODUCTS PRESENTED IN THIS CATALOGUE AT ANY TIME.

LAYING AND CLEANING RECOMMENDATIONS

INFORMATION ON THE TYPE OF GLUE TO BE USED FOR INDOOR PORCELAIN STONEWARE

TYPE OF UNDERLAY	FLOOR/INDOOR			
	Normal drying adhesives		Quick-setting adhesive	
	<1600 cm2 the major side must not be more than 40 cm (16")	>1600 cm2	<1600 cm2 the major side must not be more than 40 cm (16")	>1600 cm2
	CLASS	CLASS	CLASS	CLASS
Cement screeds, anhydrite	C2TE	C2TE/S1	C2FT/S1	C2FT/S2
Heating screeds. Concrete. Old ceramic tiles, stone material.	C2TE/S1	C2/S2	C2FTE/S2	C2FT/S2
		C2TE/S2	C2FT/S2	C2FTE/S2
Wood, PVC.	R2	R2	C2FTE/S2	-
Metal	R2	R2	-	-
Waterproofing systems	C2TE/S1	C2TE/S2	C2FTE/S2	C2FTE/S2
	D2TE			

TYPE OF UNDERLAY	WALL/INDOOR			
	Normal drying adhesives		Quick-setting adhesive	
	<1600 cm2 the major side must not be more than 40 cm (16")	>1600 cm2	<1600 cm2 the major side must not be more than 40 cm (16")	>1600 cm2
	CLASS	CLASS	CLASS	CLASS
Plaster based on plaster* or cement, plasterboard, Fibrocement panels, lightened blocks, waterproofing systems based...	C2TE	C2TE/S1	C2FT/S1	C2FTIE/S2
	D2TE			
Concrete. Old ceramic tiles, stone material.	C2TE/S1	C2/S2	C2FTE/S2	C2FT/S2
		C2TE/S2	C2FT/S2	C2FT/S2
Wood conglomerates panels	R2T	R2T	C2FT/S2	-
Metal	R2T	R2T	-	-

LAYING AND CLEANING RECOMMENDATIONS



TECHNICAL PARTNERSHIP WITH: TECHNICAL PARTNER

INFORMATION ON THE TYPE OF GLUE TO BE USED FOR OUTDOOR PORCELAIN STONWARE

FLOOR/OUTDOOR

TYPE OF UNDERLAY	Normal drying adhesives		Quick-setting adhesive	
	<1600 cm2 the major side must not be more than 40 cm (16")	>1600 cm2	<1600 cm2 the major side must not be more than 40 cm (16")	>1600 cm2
	CLASS	CLASS	CLASS	CLASS
Cement screeds, anhydrite Concrete. Old ceramic tiles, stone material.	C2TE/S1	C2/S2	C2FTE/S2	C2FT/S2
		C2TE/S2	C2FT/S2	
Waterproofing systems	C2TE/S1	C2/S2	C2FTE/S2	C2FT/S2

WALL/OUTDOOR

TYPE OF UNDERLAY	Normal drying adhesives		Quick-setting adhesive	
	<1600 cm2 the major side must not be more than 40 cm (16")	>1600 cm2	<1600 cm2 the major side must not be more than 40 cm (16")	>1600 cm2
	CLASS	CLASS	CLASS	CLASS
Plaster, concrete.	C2TE/S1	C2/S2	C2FTE/S2	C2FT/S2
		C2TE/S2	C2FT/S2	C2FT/S2
Waterproofing systems	C2TE/S1	C2/S2	C2FTE/S2	C2FT/S2

	FUGA / STUCCATURA		
	CEMENT BASED	EPOXY	JOINTS
DURING LAYING	INSTANT REMOVER (Acid)	EPOXY PRO (Alkaline)	SILICONE REFINER
END OF WORK	DETERDEK PRO (Acid)	CR10 (Alkaline)	ZEROSIL

TYPE OF DETERGENT

MAINTENANCE	ORDINARY	CLEANER PRO (Neutral)
	SANITISING ORDINARY	SANIFAST (Neutral)
	EXTRAORDINARY	PS87 PRO (Alkaline)

In case of particular stains We suggest the use of the following specific removers.
Before applying the products, carefully read the instructions on the label and/or on the technical sheet,
checking their compatibility with the material installed.
For more information or to find products, contact Filà. info@filasolutions.com

STAINS	TYPE OF STAINS	PRODUCT
BUILDING SITE	SILICONE	ZEROSIL
	POLYURETHANE FOAM	
	ADHESIVE TAPE RESIDUES	
	SCRATCH REMOVER WAX	
INORGANIC BUILDING SITE	RUST	NO RUST
	CEMENT-SALTPETER	DETERDEK PRO
	LIMESCALE	
	ALUMINIUM / METAL MARKS	
	PENCIL	DETERDEK PRO + ADEQUATE PAD
ORGANIC SITE	SUCTION CUP MARK	PS87 PRO
	EPOXY FILLER	CR10
ORGANIC	OIL AND GREASE	PS87 PRO
	SPARKLING DRINKS AND JUICES	
	URINE AND VOMIT	
	WAX CRAYON	
	TYRE MARKS	SR95
	COFFEE / WINE	
	BLOOD	
	INK	
	NICOTINE	
	HAIR DYE	
	CANDLE WAX	ZEROSIL
	DIRTY GROUTING	FUGANET
	BITUMEN	ZEROSIL
	VARNISH/PAINT	NO PAINT STAR
	ROUTINE MAINTENANCE	CLEANER PRO
	EXTRAORDINARY MAINTENANCE	PS87 PRO + DETERDEK PRO

FOR MORE INFORMATIONS

www.filasolutions.com - assistenza@filasolutions.com

OR SIMILAR

GAMBINI GROUP SI RISERVA IL DIRITTO DI APPORTARE IN QUALSIASI MOMENTO MODIFICHE O VARIAZIONI AI PRODOTTI PRESENTI IN QUESTO CATALOGO.

GAMBINI GROUP RESERVES THE RIGHT TO CHANGE THE PRODUCTS PRESENTED IN THIS CATALOGUE AT ANY TIME.

NON SI ACCETTANO RECLAMI PER I MATERIALI POSTI IN OPERA.

NO COMPLAINTS WILL BE ACCEPTED FOR MATERIAL AFTER LAYING.

COORDINAMENTO:
UFFICIO MARKETING GAMBINI GROUP

FINITO DI STAMPARE:
MAGGIO 2023

GAMBINI TILE ON TIME - BRAND OF:
GAMBINI GROUP S.p.A.

VIA RADICI IN PIANO, 675 - 41049 SASSUOLO (MO) . ITALY
PH. +39 0536 995711 . FAX +39 0536 905042-807182



Ceramics of Italy

Stay connected with our social networks:



@Gambinitile /Gambini group Ceramiche



@Gambinigroup



@Gambinigroup s.p.a



Gambinigroup s.p.a



Terms & Conditions

GAMBINI DOMESTIC - 2023 TERMS AND CONDITIONS of SALE

1. Payment Terms

- All payment terms are subject to credit approval by GAMBINI GROUP .
- Standard payment terms are net 30 days from invoice date with approved credit.
- Overdue and delinquent balances are subject to being placed for collection and Buyer shall pay all expenses including, but not limited to, collection costs, court costs, and reasonable attorney fees.
- All purchases are subject to the Terms & Conditions hereby outlined.
- GAMBINI GROUP reserves the right to refuse credit or to fill material orders at its sole discretion.
- GAMBINI GROUP may change credit limits or other terms at any time at its sole discretion.
- Confirmed orders must be picked up promptly. Buyer agrees to pay reasonable storage fees if materials are stored at Seller's facility more than seven (7) days.

2. Purchase Orders

- Buyer must submit written purchase orders.
- If the Buyer submits written purchase orders with terms and conditions that are at variance with the terms and conditions of sale contained herein, the terms and conditions of GAMBINI GROUP shall prevail.
- GAMBINI GROUP assumes, and is entitled to rely upon, the apparent authority of all Buyers' employees in placing orders, both written and verbal, under Buyer's account.
- Sales are for full PALLETS only. (8x8 D20 program excluded, sold by the Full Box)
- Sales are for available material only, backordered will be cancel and order re-submitted.
- Holds for 24hrs only upon management approval.

3. Shipping

- GAMBINI GROUP does not provide or quote freight. Sales are strictly FOB warehouse and Buyer is responsible to organize and pay for freight.
- Merchandise shipped by common carrier is shipped FOB shipping point and risk of loss, due to damage or non-delivery, due to carrier fault lies with the Buyer. All claims for damage or shortages should be made by

Buyer upon receipt of the material and filed with the carrier handling the shipment.

4. Discrepancy Claims

- Claims stemming from discrepancies between material orders and material shipments or billings must be made within 48 hours of material receipt.
- Any claim not presented within the specified time limit shall not be honored.

5. Material Cancellations, Returns and Restocking Charges

- Buyer may cancel order of stocked items only within 24 hours of GAMBINI GROUP confirmation.
- No product of any kind shall be returned without the prior written approval and specific shipping instructions from the GAMBINI GROUP manager.
- Unless otherwise agreed, all material returns shall be assessed a 30% restock charge. Buyer shall be responsible for the payment of all associated freight charges. All returns must be made within 60 days of the invoice date.
- To be eligible for credit, returned material must arrive at GAMBINI GROUP domestic warehouse in acceptable condition, and the shade of returned material must match existing GAMBINI GROUP stock.
- Discontinued or non-stock material may not be returned.



GAMBINI
TILE ON TIME

a brand of Gambini Group SpA

www.gambinitile.com